



PTE30

Power Pallet Truck

Highly maneuverable motorized hand truck.

CAPACITY

3000 lbs.

BATTERY—CHARGER

24-volt industrial battery pack with (2)12V 95AH maintenance free batteries. Matching 8A SCR charger 110VAC plug-in. Minimum battery weight 200 lbs.

SPEED

Curtis SepEx™ transistor speed control

Variable from 0 mph to 3.66 mph empty
Variable from 0 mph to 2.86 mph loaded

WEIGHT

630 lbs with battery

TIRES / WHEELS

DRIVE

10" x 2.5" polyurethane

LOAD

3.15" x 4.75" polyurethane

STABILITY & FORKS

4" Diameter stability caster wheels

Phenolic "pallet" entry wheels

HYDRAULICS

Heavy duty pump motor with relief valve protects system from overloading.

ELECTRICAL

Advanced **Curtis** drive controller provides smooth step-less acceleration with infinitely variable speed control. Anti-rollback feature delivers maximum power when required for uphill or down-hill gradients Fully programmable.

BRAKES

Electromagnetic disc brake connected to drive shaft . Adjustable neutral braking, plugging, and regenerating braking are standard. "Dead-man" emergency brake with power cutoff.

CONTROLS

Travel lift and lower functions are located in the ergonomic operator handle designed to allow operation with either hand. Wrap around hand guard, reversing switch, dual "butterfly" thumb control, and horn are standard.



TRANSMISSION

Durable long life low noise gearbox with Long life precision ground gears.

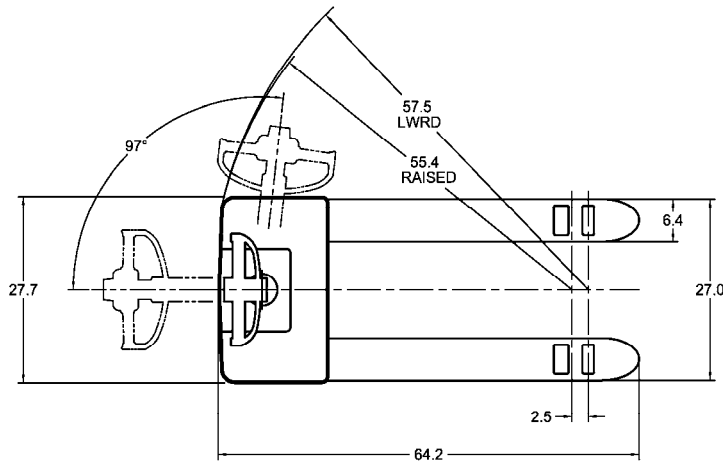
SERVICEABILITY

Removal of one piece power head cover exposes major components for inspection and maintenance. Drive tire can be removed with one nut.

STANDARD EQUIPMENT

- Curtis Transistor Travel Controller
- "Butterfly" Travel Thumb Control
- Key Switch and Horn Button
- Combo Gauge—Hour Meter with Battery Discharge Indicator (BDI)
- Reversing Switch in Handle
- Stability Casters
- Pallet "Entry" Wheels



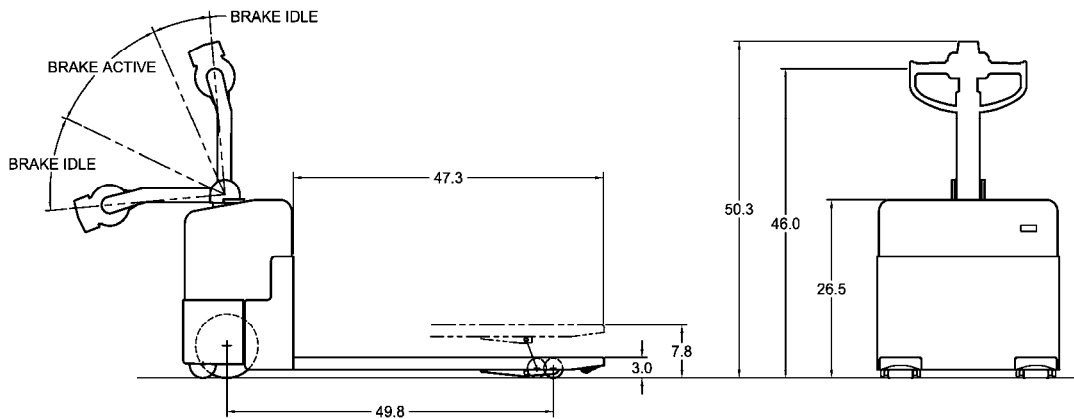
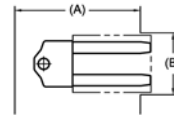


Pallet Width	Pallet Length					
	36		42		48	
	A	B	A	B	A	B
36	61	38	63	52	69	55
40	61	42	64	54	68	57
42	61	44	64	58	69	58
48	62	50	64	58	70	62
60	63	50	65	69	71	72

Note: Data shown in inches.

Dimensions shown are zero clearance. Add 6-12" for maneuvering.

A - Right Angle Stack
B - Intersecting Aisle



Gradeability
Un-Loaded 7%
Loaded 5%