



# M22

## Manual Straddle Truck

Narrow aisle straddle stacker, work table, loading/unloading in tight material handling applications. Powered lift — Manual travel.

### CAPACITY

2200 lbs. @ 24" Load Center

### BATTERY

12V 125 AH Polycase battery

### CHARGER

Built-in 8 amp 110 VAC plug

### CHASSIS WEIGHT

1064 lbs. with battery and charger

### PERFORMANCE

#### TRAVEL

Manual

#### LIFT—ELECTRIC

Up to 23.5 fpm empty.

Up to 23.2 loaded—2000 lbs.

#### LOWERING—HYDRAULIC

Variable

### WHEELS

#### SWIVEL CASTER

7.75" x 2" polyurethane

#### LOAD

3.75" x 2" polyurethane

### CONTROLS

Raise and lower lever located in front of operator. Provides fixed lifting speed and variable lowering speed.

Ergonomic operator mast handles and spring-loaded steer handle with positive steer "tracking" caster wheel. Slip resistant foot actuated floor lock for secure grip while parked. Key lock to prevent unauthorized use of truck.

### HYDRAULICS

Heavy duty lift motor, pump, and control valve. Built in relief valve protects system from overloading. Pressure compensating flow control valve at base of telescopic models regulates lower speed. Hydraulic reservoir with filter prevents foreign material from entering the system



### ELECTRICAL

On/Off key switch, charger amp meter, easy access battery compartment with integral 12-amp charger are standard. Control circuits are fuse-protected with auto reset circuit breaker; plug-in type connectors.

### FRAME AND MAST

All steel construction welded rigid steel chassis for distortion free life. Adjustable forks on pin style carriage. Forks are adjustable from 8" ID to 31" OD. Standard fork is 42" long x 3.5" wide x 1.25" thick

High visibility mast with dual lifting chains and heavy duty mast rollers. Wire mesh safety guard Chrome plated lift cylinder rod provides smooth lift/lower operation and long life.

Straddle legs are made from heavy gauge steel plate with end contoured around load wheel. Flush mounted wheel axles to prevent damage. Four position adjustment allow for preset outrigger dimensions for various size pallets.

Inside Dimension:  
(ID): 38", 44", 49", 55"

Outside Dimension:  
(OD): 44", 50", 55", 61"

### SERVICEABILITY

One piece door cover exposes major components for inspection and maintenance. Built 110 VAC charger cord and battery.

### STANDARD EQUIPMENT

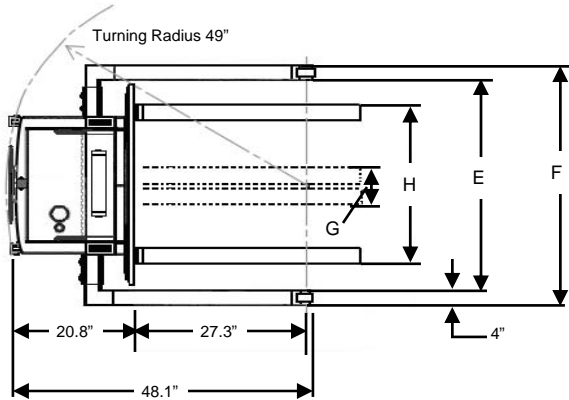
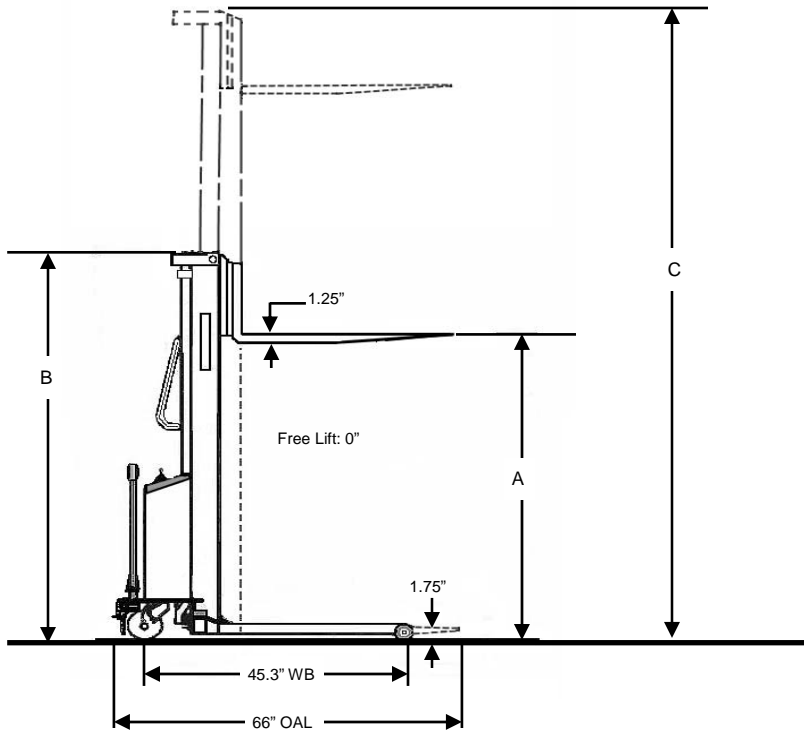
- Adjustable fork carriage
- Amp meter
- Key switch
- 125 amp hour battery
- Integral 8 amp charger
- Foot actuated floor lock
- Pallet forks
- Positive steer tracking caster
- Spring loaded steer handle



### Right Angle Stacking Aisle Width

Load Length	Load Width			
	36"	40"	42"	48"
36"	62"	62"	62"	63"
42"	62"	62"	63"	63"
48"	66"	67"	68"	70"

- Aisle dimensions listed have zero clearance
- Add 6" for ease of use
- Minimum beam length 96"



Model #	Lift Height	Col. Height	Ext. Height	Adjustable Straddle Legs			Pin Style Fork Carriage				<sup>3</sup> Ship Weight
	A	B	C	<sup>2</sup> Length	ID	OD	ID	OD	Length	Width	
					E	F	G	H			

2200 lbs. @ 24" Load Center, Non-Telescopic Mast

M22-63	63	79.1	79.1	27.25	38, 44, 49, 55	44, 50, 54, 61	7	29	42	3.5	995
--------	----	------	------	-------	----------------	----------------	---	----	----	-----	-----

2200 lbs. @ 24" Load Center, Telescopic Mast

M22-98	98	70	114	27.25	38, 44, 49, 55	44, 50, 54, 61	7	29	42	3.5	1105
M22-118	118	81.25	134	27.25	38, 44, 49, 55	44, 50, 54, 61	7	29	42	3.5	1365

<sup>2</sup>Face of fork to center of load wheel

<sup>3</sup>Estimated shipping weight with battery